



SRINIVASA INSTITUTE OF ENGINEERING AND TECHNOLOGY
(UGC – Autonomous Institution)

(Approved by AICTE, Permanently affiliated to JNTUK, Kakinada, ISO 9001: 2015 certified Institution)
(Accredited by NAAC with 'A' Grade; Recognised by UGC under sections 2(f) & 12(B))
NH-216, Amalapuram-Kakinada Highway, Cheyyeru (V), AMALAPURAM -533216.

Student satisfaction survey

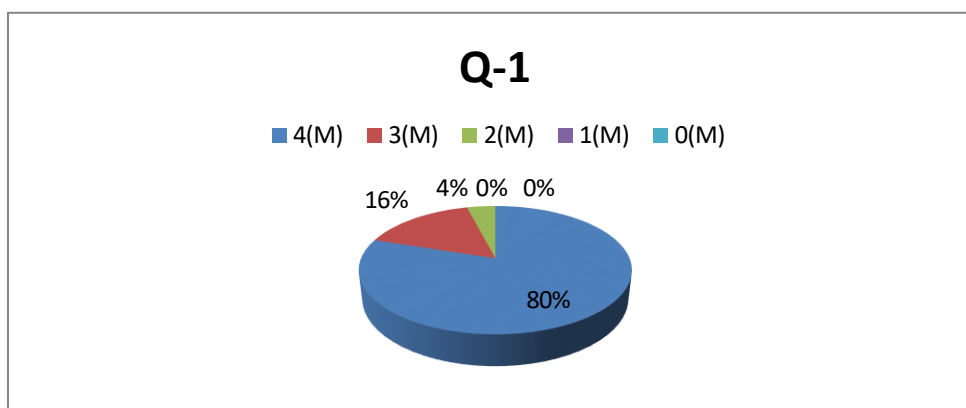
AY: 2024-25

1. How much of the syllabus was covered in the class? []

4 – 85 to 100% 3 – 70 to 84% 2 – 55 to 69% 1-30 to 54% 0- Below 30%

Report

| Students | 4(M) | 3(M) | 2(M) | 1(M) | 0(M) |
|----------|------|------|------|------|------|
| Q-1 | 40 | 8 | 2 | 0 | 0 |

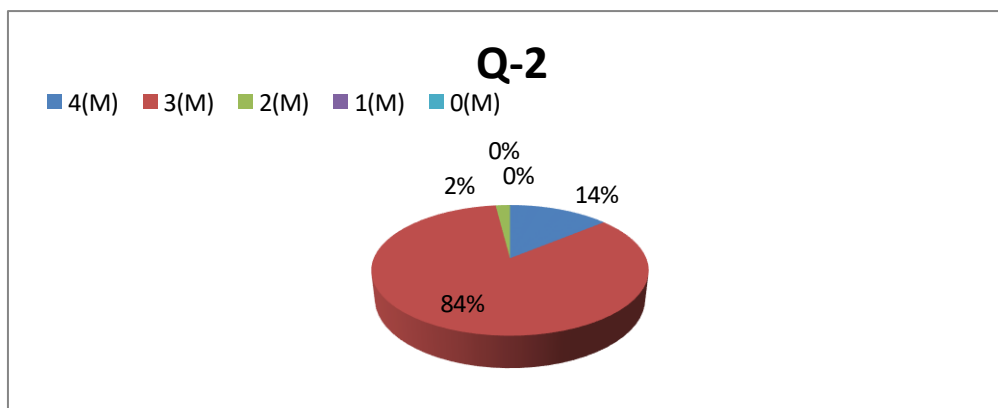


2. How well did the teachers prepare for the classes? []

4 – Thoroughly. 3 – Satisfactorily. 2 – Poorly. 1 – Indifferently. 0 – Won't teach at all

Report

| Students | 4(M) | 3(M) | 2(M) | 1(M) | 0(M) |
|----------|------|------|------|------|------|
| Q-2 | 7 | 42 | 1 | 0 | 0 |





SRINIVASA INSTITUTE OF ENGINEERING AND TECHNOLOGY
(UGC – Autonomous Institution)

(Approved by AICTE, Permanently affiliated to JNTUK, Kakinada, ISO 9001: 2015 certified Institution)
(Accredited by NAAC with 'A' Grade; Recognised by UGC under sections 2(f) & 12(B))
NH-216, Amalapuram-Kakinada Highway, Cheyyeru (V), AMALAPURAM -533216.

Student satisfaction survey

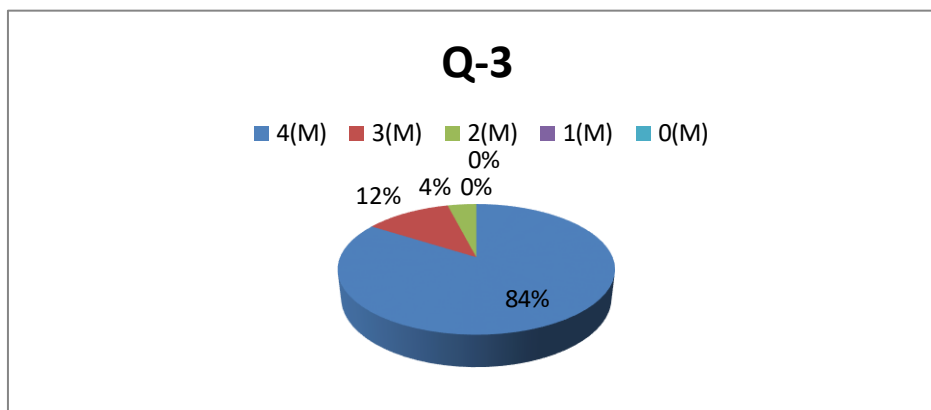
AY: 2024-25

3. How well were the teachers able to communicate? []

4 – Always effective. 3 – Sometimes effective. 2 – Just satisfactorily. 1 – Generally Ineffective. 0 – Very poor communication.

Report

| Students | 4(M) | 3(M) | 2(M) | 1(M) | 0(M) |
|----------|------|------|------|------|------|
| Q-3 | 42 | 6 | 2 | 0 | 0 |

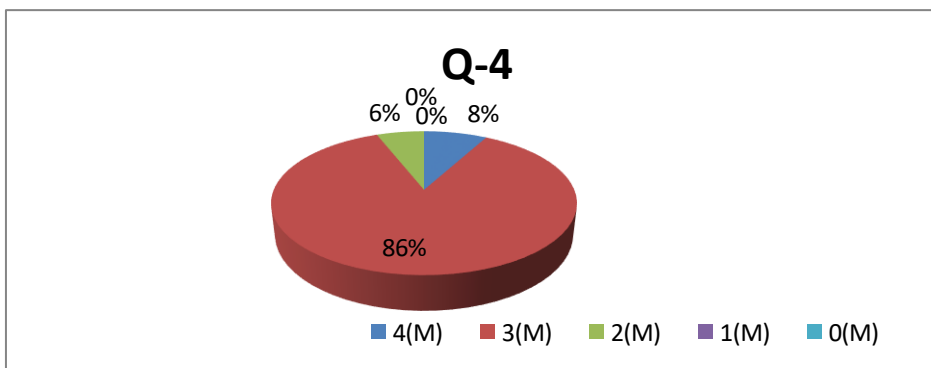


4. The teacher's approach to teaching can best be described as []

4 – Excellent. 3 – Very good. 2 – Good. 1 – Fair. 0 – Poor

Report

| Students | 4(M) | 3(M) | 2(M) | 1(M) | 0(M) |
|----------|------|------|------|------|------|
| Q-4 | 4 | 43 | 3 | 0 | 0 |





SRINIVASA INSTITUTE OF ENGINEERING AND TECHNOLOGY
(UGC – Autonomous Institution)

(Approved by AICTE, Permanently affiliated to JNTUK, Kakinada, ISO 9001: 2015 certified Institution)
(Accredited by NAAC with 'A' Grade; Recognised by UGC under sections 2(f) & 12(B))
NH-216, Amalapuram-Kakinada Highway, Cheyyeru (V), AMALAPURAM -533216.

Student satisfaction survey

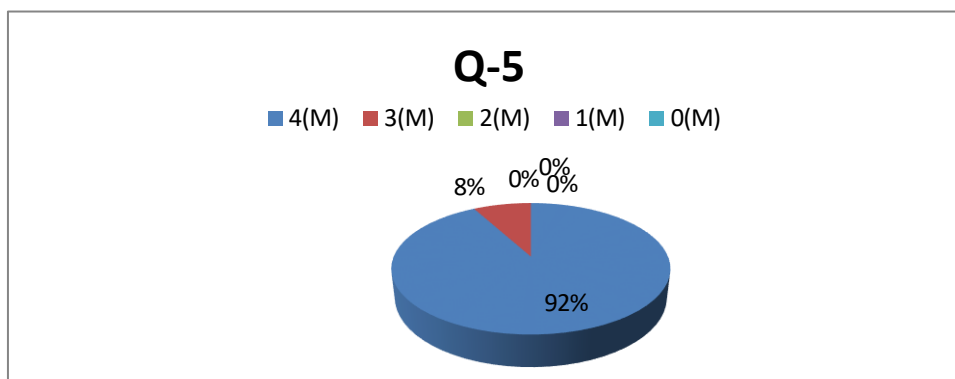
AY: 2024-25

5. Fairness of the internal evaluation process by the teachers. []

4 – Always fair. 3 – Usually fair. 2 – Sometimes unfair. 1 – Usually unfair. 0– Unfair

Report

| Students | 4(M) | 3(M) | 2(M) | 1(M) | 0(M) |
|----------|------|------|------|------|------|
| Q-5 | 46 | 4 | 0 | 0 | 0 |

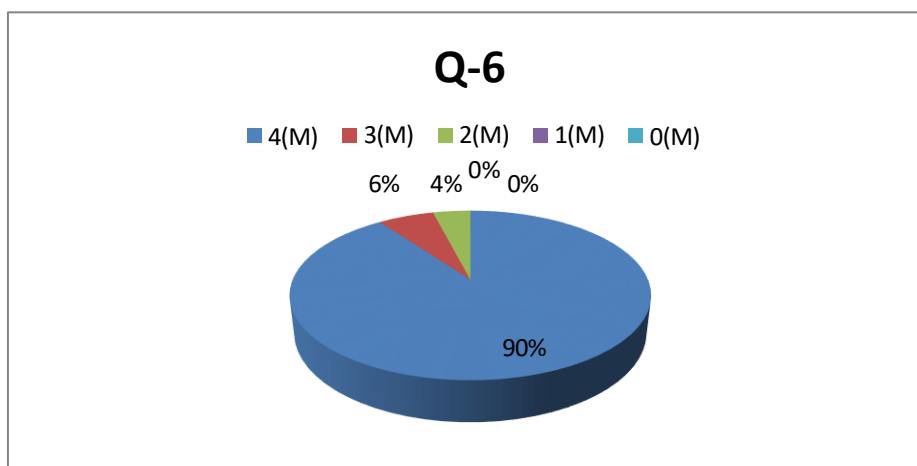


6. Was your performance in assignments discussed with you? []

4 – Every time. 3 – Usually. 2 – Occasionally/Sometimes. 1 – Rarely. 0– Never

Report

| Students | 4(M) | 3(M) | 2(M) | 1(M) | 0(M) |
|----------|------|------|------|------|------|
| Q-6 | 45 | 3 | 2 | 0 | 0 |





SRINIVASA INSTITUTE OF ENGINEERING AND TECHNOLOGY
(UGC – Autonomous Institution)

(Approved by AICTE, Permanently affiliated to JNTUK, Kakinada, ISO 9001: 2015 certified Institution)
(Accredited by NAAC with 'A' Grade; Recognised by UGC under sections 2(f) & 12(B))
NH-216, Amalapuram-Kakinada Highway, Cheyyeru (V), AMALAPURAM -533216.

Student satisfaction survey

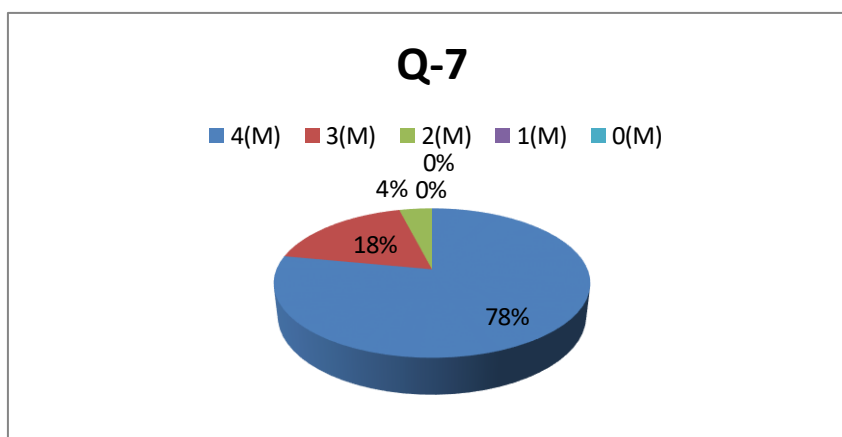
AY: 2024-25

7. The institute takes active interest in promoting internship, student exchange, field visit opportunities for students []

4 – Regularly. 3 – Often. 2 – Sometimes. 1 – Rarely. 0– Never

Report

| Students | 4(M) | 3(M) | 2(M) | 1(M) | 0(M) |
|----------|------|------|------|------|------|
| Q-7 | 39 | 9 | 2 | 0 | 0 |



8. The teaching and mentoring process in your institution facilitates you in cognitive, social and emotional growth. []

4 – Significantly 3 – Very well 2 – Moderately 1 – Marginally 0– Not at all

Report

| Students | 4(M) | 3(M) | 2(M) | 1(M) | 0(M) |
|----------|------|------|------|------|------|
| Q-8 | 35 | 12 | 3 | 0 | 0 |



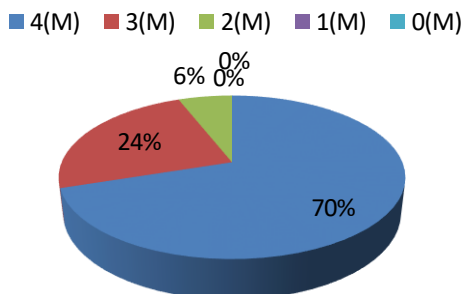
SRINIVASA INSTITUTE OF ENGINEERING AND TECHNOLOGY
(UGC – Autonomous Institution)

(Approved by AICTE, Permanently affiliated to JNTUK, Kakinada, ISO 9001: 2015 certified Institution)
(Accredited by NAAC with 'A' Grade; Recognised by UGC under sections 2(f) & 12(B))
NH-216, Amalapuram-Kakinada Highway, Cheyyeru (V), AMALAPURAM -533216.

Student satisfaction survey

AY: 2024-25

Q-8



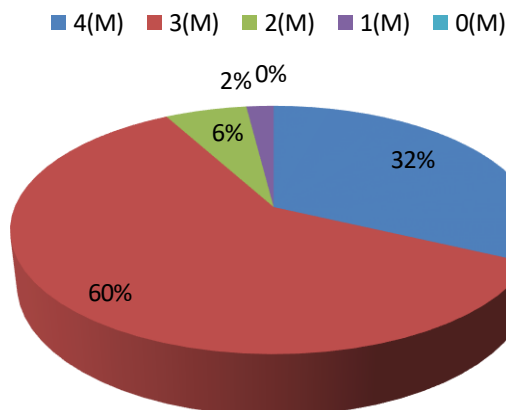
9. The institution provides multiple opportunities to learn and grow. []

4 – Strongly agree 3 – Agree. 2 – Neutral. 1 – Disagree. 0– Strongly disagree.

Report

| Students | 4(M) | 3(M) | 2(M) | 1(M) | 0(M) |
|----------|------|------|------|------|------|
| Q-9 | 16 | 30 | 3 | 1 | 0 |

Q-9



10. Teachers inform you about your expected competencies, course outcomes and programme



SRINIVASA INSTITUTE OF ENGINEERING AND TECHNOLOGY
(UGC – Autonomous Institution)

(Approved by AICTE, Permanently affiliated to JNTUK, Kakinada, ISO 9001: 2015 certified Institution)
(Accredited by NAAC with 'A' Grade; Recognised by UGC under sections 2(f) & 12(B))
NH-216, Amalapuram-Kakinada Highway, Cheyyeru (V), AMALAPURAM -533216.

Student satisfaction survey

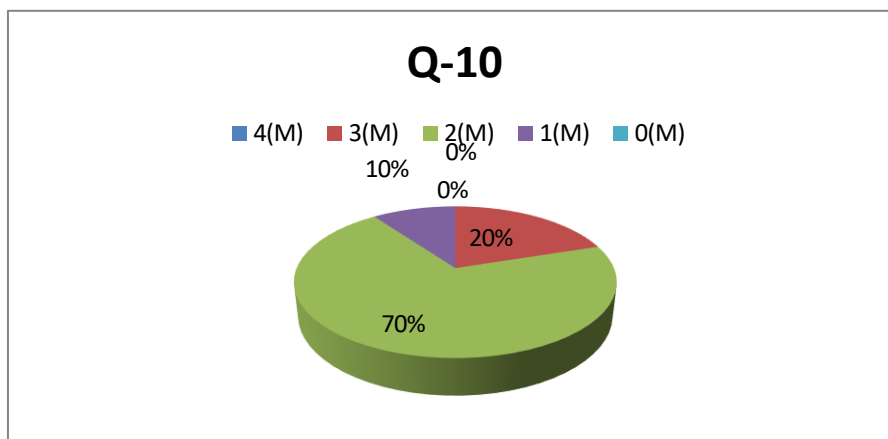
AY: 2024-25

outcomes. []

Report

4 – Every time. 3 – Usually. 2– Occasionally/Sometimes 1 – Rarely. 0– Never

| Students | 4(M) | 3(M) | 2(M) | 1(M) | 0(M) |
|----------|------|------|------|------|------|
| Q-10 | 0 | 10 | 35 | 5 | 0 |

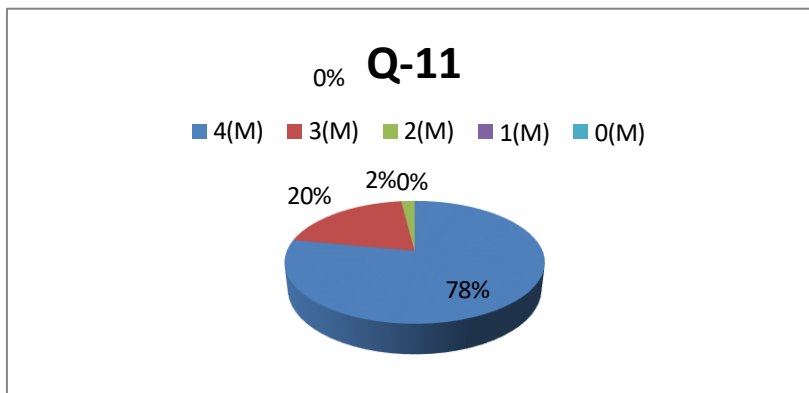


11. Your mentor does a necessary follow-up with an assigned task to you. []

4 – Every time. 3 – Usually 2 – Occasionally/Sometimes. 1 – Rarely, 0 – I don't have a Mentor

Report

| Students | 4(M) | 3(M) | 2(M) | 1(M) | 0(M) |
|----------|------|------|------|------|------|
| Q-11 | 39 | 10 | 1 | 0 | 0 |





SRINIVASA INSTITUTE OF ENGINEERING AND TECHNOLOGY
(UGC – Autonomous Institution)

(Approved by AICTE, Permanently affiliated to JNTUK, Kakinada, ISO 9001: 2015 certified Institution)
(Accredited by NAAC with 'A' Grade; Recognised by UGC under sections 2(f) & 12(B))
NH-216, Amalapuram-Kakinada Highway, Cheyyeru (V), AMALAPURAM -533216.

Student satisfaction survey

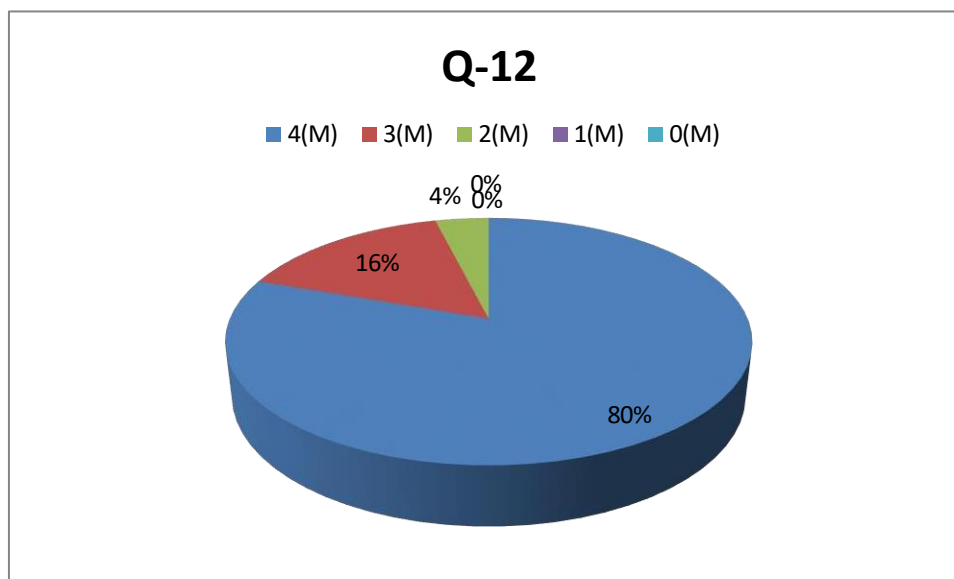
AY: 2024-25

12. The teachers illustrate the concepts through examples and applications.[]

4 – Every time. 3 – Usually. 2 – Occasionally/Sometimes. 1 – Rarely. 0 – Never

Report

| Students | 4(M) | 3(M) | 2(M) | 1(M) | 0(M) |
|----------|------|------|------|------|------|
| Q-12 | 41 | 8 | 2 | 0 | 0 |



13. The teachers identify your strengths and encourage you with providing right level of challenges.[]

4 – Fully. 3 – Reasonably. 2 – Partially. 1 – Slightly. 0– Unable to

Report

| Students | 4(M) | 3(M) | 2(M) | 1(M) | 0(M) |
|----------|------|------|------|------|------|
| Q-13 | 10 | 35 | 4 | 1 | 0 |



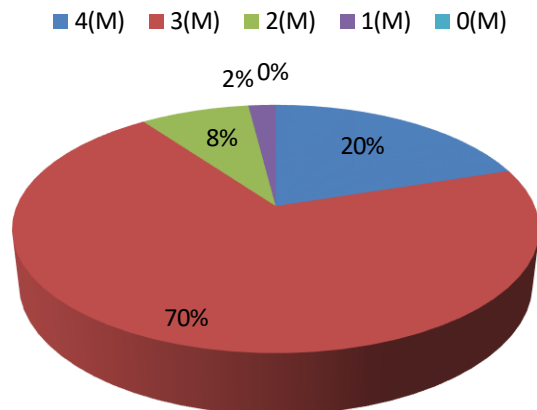
SRINIVASA INSTITUTE OF ENGINEERING AND TECHNOLOGY
(UGC – Autonomous Institution)

(Approved by AICTE, Permanently affiliated to JNTUK, Kakinada, ISO 9001: 2015 certified Institution)
(Accredited by NAAC with 'A' Grade; Recognised by UGC under sections 2(f) & 12(B))
NH-216, Amalapuram-Kakinada Highway, Cheyyeru (V), AMALAPURAM -533216.

Student satisfaction survey

AY: 2024-25

Q-13



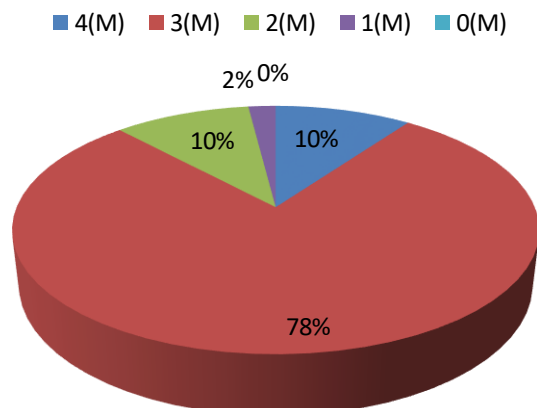
14. Teachers are able to identify your weaknesses and help you to overcome them.[]

4 – Every time. 3 – Usually. 2 – Occasionally/Sometimes 1 – Rarely. 0 – Never

Report

| Students | 4(M) | 3(M) | 2(M) | 1(M) | 0(M) |
|----------|------|------|------|------|------|
| Q-14 | 5 | 39 | 5 | 1 | 0 |

Q-14





SRINIVASA INSTITUTE OF ENGINEERING AND TECHNOLOGY
(UGC – Autonomous Institution)

(Approved by AICTE, Permanently affiliated to JNTUK, Kakinada, ISO 9001: 2015 certified Institution)
(Accredited by NAAC with 'A' Grade; Recognised by UGC under sections 2(f) & 12(B))
NH-216, Amalapuram-Kakinada Highway, Cheyyeru (V), AMALAPURAM -533216.

Student satisfaction survey

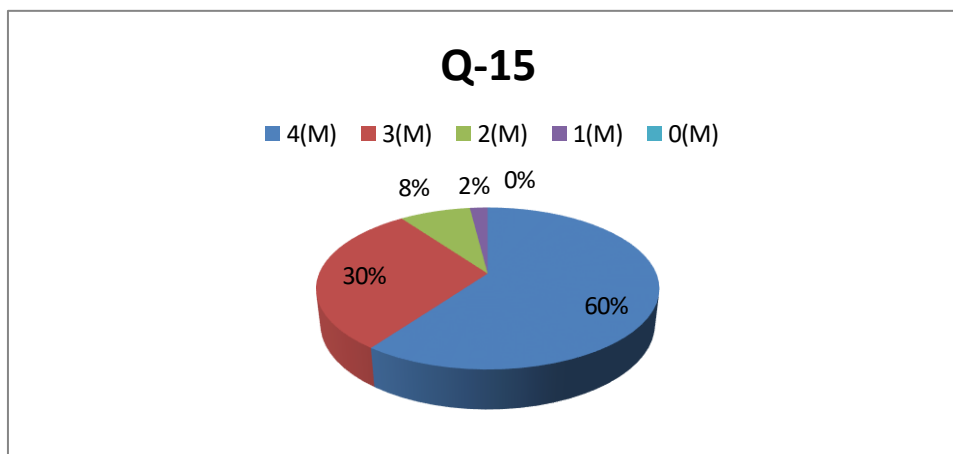
AY: 2024-25

15. The institution makes effort to engage students in the monitoring, review and continuous quality improvement of the teaching learning process.[]

4 – Strongly agree 3 – Agree 2 – Neutral 1 – Disagree 0 – Strongly disagree

Report

| Students | 4(M) | 3(M) | 2(M) | 1(M) | 0(M) |
|----------|------|------|------|------|------|
| Q-15 | 30 | 15 | 4 | 1 | 0 |



16. The institute/ teachers use student centric methods, such as experiential learning, participative learning and problem solving methodologies for enhancing learning experiences. []

4 – To a great extent. 3 – Moderate. 2 – Somewhat. 1 – Very little. 0 – Not at all

Report

| Students | 4(M) | 3(M) | 2(M) | 1(M) | 0(M) |
|----------|------|------|------|------|------|
| Q-16 | 20 | 25 | 3 | 2 | 0 |



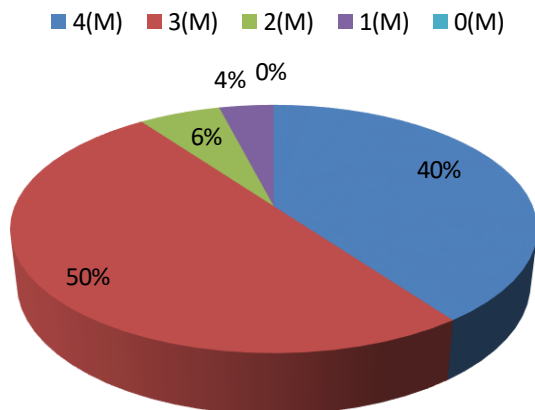
SRINIVASA INSTITUTE OF ENGINEERING AND TECHNOLOGY
(UGC – Autonomous Institution)

(Approved by AICTE, Permanently affiliated to JNTUK, Kakinada, ISO 9001: 2015 certified Institution)
(Accredited by NAAC with 'A' Grade; Recognised by UGC under sections 2(f) & 12(B))
NH-216, Amalapuram-Kakinada Highway, Cheyzeru (V), AMALAPURAM -533216.

Student satisfaction survey

AY: 2024-25

Q-16



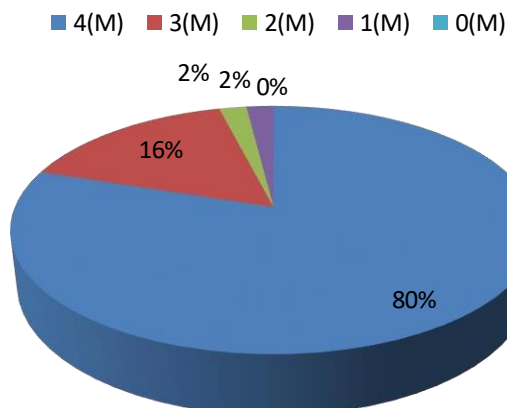
17. Teachers encourage you to participate in extracurricular activities. []

4 – Strongly agree 3 – Agree 2 – Neutral. 1 – Disagree. 0 – Strongly disagree

Report

| | | | | | |
|----------|------|------|------|------|------|
| Students | 4(M) | 3(M) | 2(M) | 1(M) | 0(M) |
| Q-17 | 40 | 8 | 1 | 1 | 0 |

Q-17





SRINIVASA INSTITUTE OF ENGINEERING AND TECHNOLOGY
(UGC – Autonomous Institution)

(Approved by AICTE, Permanently affiliated to JNTUK, Kakinada, ISO 9001: 2015 certified Institution)
(Accredited by NAAC with 'A' Grade; Recognised by UGC under sections 2(f) & 12(B))
NH-216, Amalapuram-Kakinada Highway, Cheyyeru (V), AMALAPURAM -533216.

Student satisfaction survey

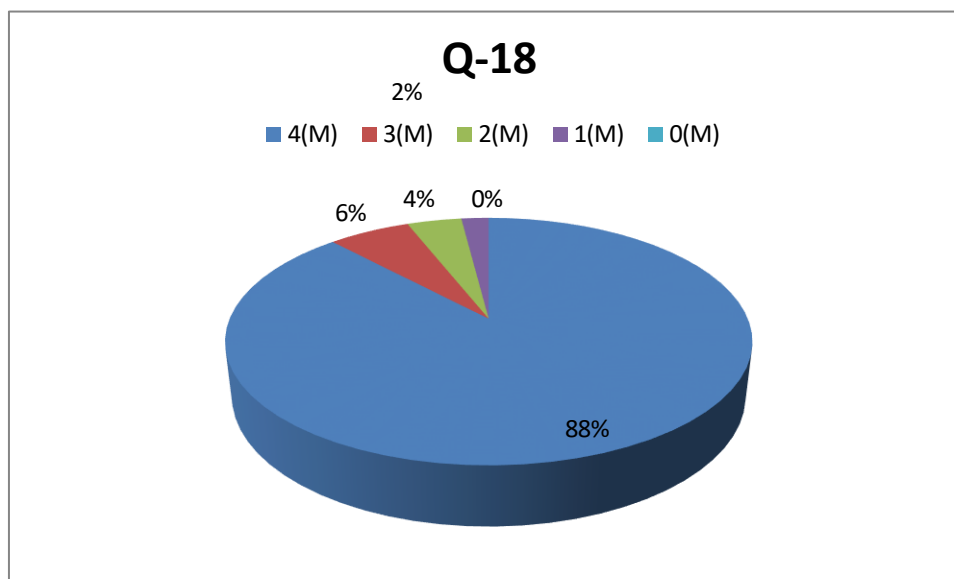
AY: 2024-25

18. Efforts are made by the institute/ teachers to inculcate soft skills, life skills and employability skills to make you ready for the world of work. []

4 – To a great extent. 3 – Moderate 2 – Somewhat. 1 – Very little. 0 – Not at all

Report

| Students | 4(M) | 3(M) | 2(M) | 1(M) | 0(M) |
|----------|------|------|------|------|------|
| Q-18 | 44 | 3 | 2 | 1 | 0 |



19. What percentage of teachers use ICT tools such as LCD projector, Multimedia, etc. while teaching.[]

4 – Above 90%. 3 – 70 – 89%. 2 – 50 – 69%. 1 – 30 – 49%. 0 – Below 29%

Report

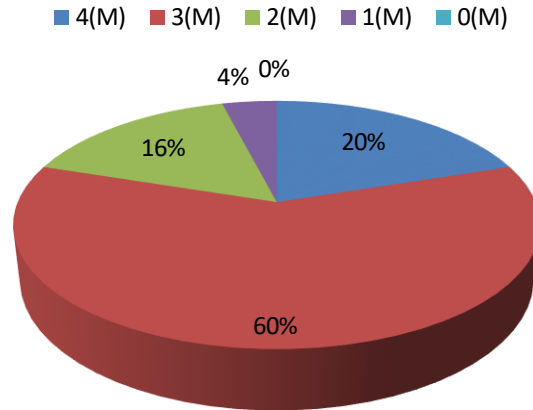
| Students | 4(M) | 3(M) | 2(M) | 1(M) | 0(M) |
|----------|------|------|------|------|------|
| Q-19 | 10 | 30 | 8 | 2 | 0 |



Student satisfaction survey

AY: 2024-25

Q-19



20. The overall quality of teaching-learning process in your institute is very good.[]

4 –Strongly agree. 3 – Agree. 2 – Neutral 1 – Disagree. 0 – Strongly disagree

Report

| Students | 4(M) | 3(M) | 2(M) | 1(M) | 0(M) |
|----------|------|------|------|------|------|
| Q-20 | 10 | 35 | 5 | 0 | 0 |

Q-20

